

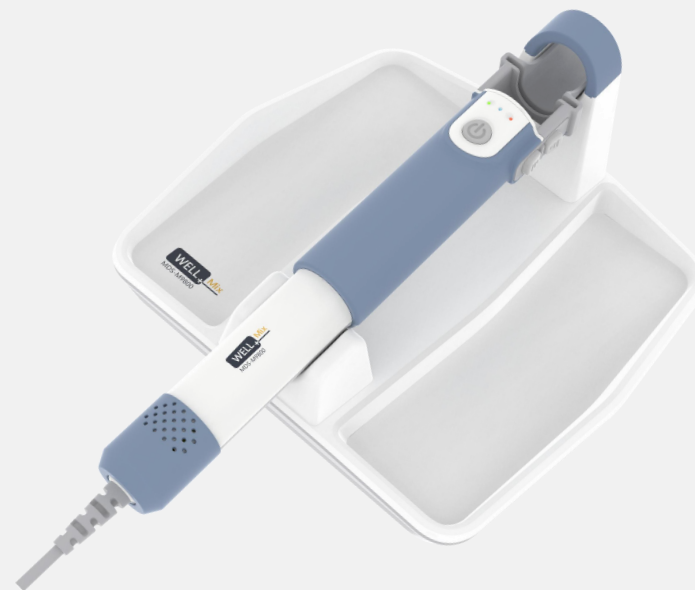


# Dispenser OEM/ODM

Weihai Medison Medical Equipment Co., Ltd



# 01 Dispenser Instruction



# 01 Use of Dispenser



1

The dispenser is a medical auxiliary device that can be used in places such as dispensing stations that require batch dispensing of medications.

---



2

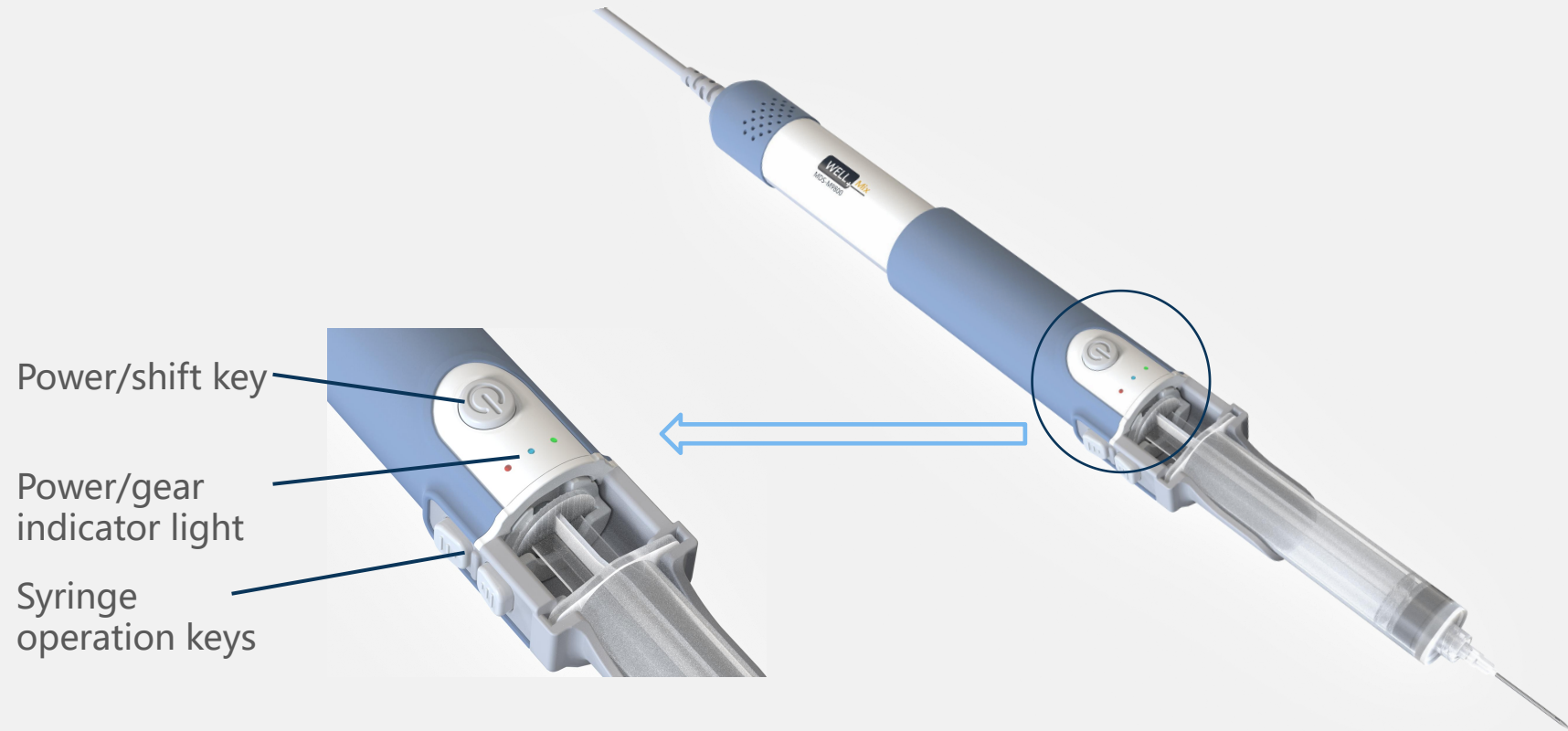
The use of a dispenser can effectively speed up the mixing process of different medicinal liquids at a stable speed, and at the same time avoid injuries to the hands of staff due to repeated pushing and pulling of syringes.



3

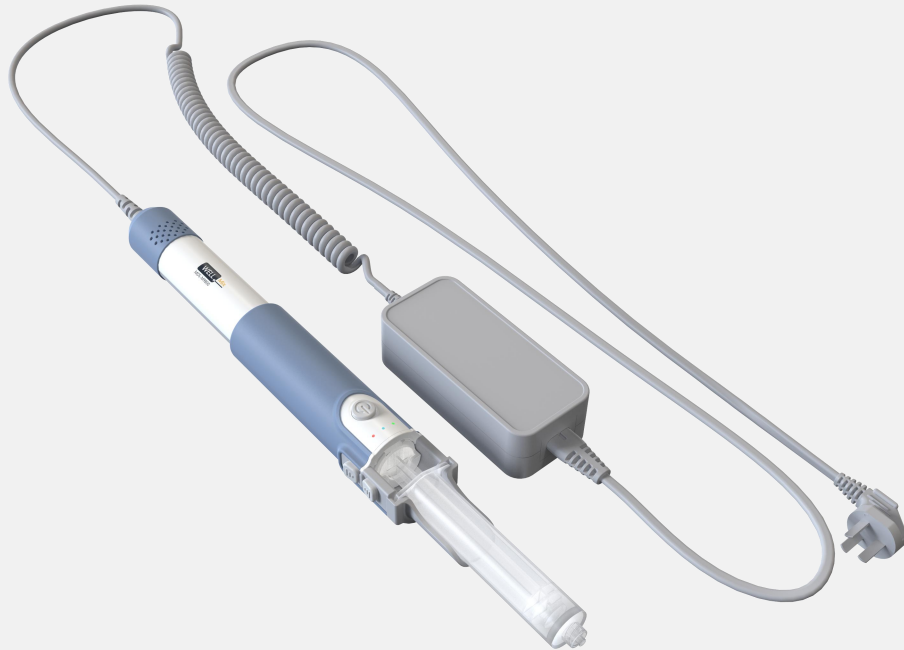
The dispenser can reduce nurses' occupational injuries, prevent tenosynovitis, tendonitis and drug injuries, free nurses from the tedious and boring dispensing work, improve work efficiency, and provide better medical services to patients.

# 01 Appearance of dispenser



# 01 Overall appearance of the dispenser

Plug-in



Rechargeable



# 01 Instruction

01

◆This product has three gears (1-3 gears). Each gear can adjust manual mode and automatic mode. The difference between the three gears is the different speed;

02

◆Press the power button for 2 to 3 seconds to turn on the machine. If the indicator light is on level 1, it is in manual mode (the indicator light is always on). Press the up and down buttons to operate; press the power button again and the indicator light will jump to level 2; Press the power button again and the indicator light jumps to level 3. The third gear has different speeds and gradually speeds up. When the display light is in level 3, press the power button again, and the display light on the left will flash. At this time, it switches to automatic mode (the display light flashes). If you need to adjust the speed, press the power button in sequence to switch to three different levels speed.

03

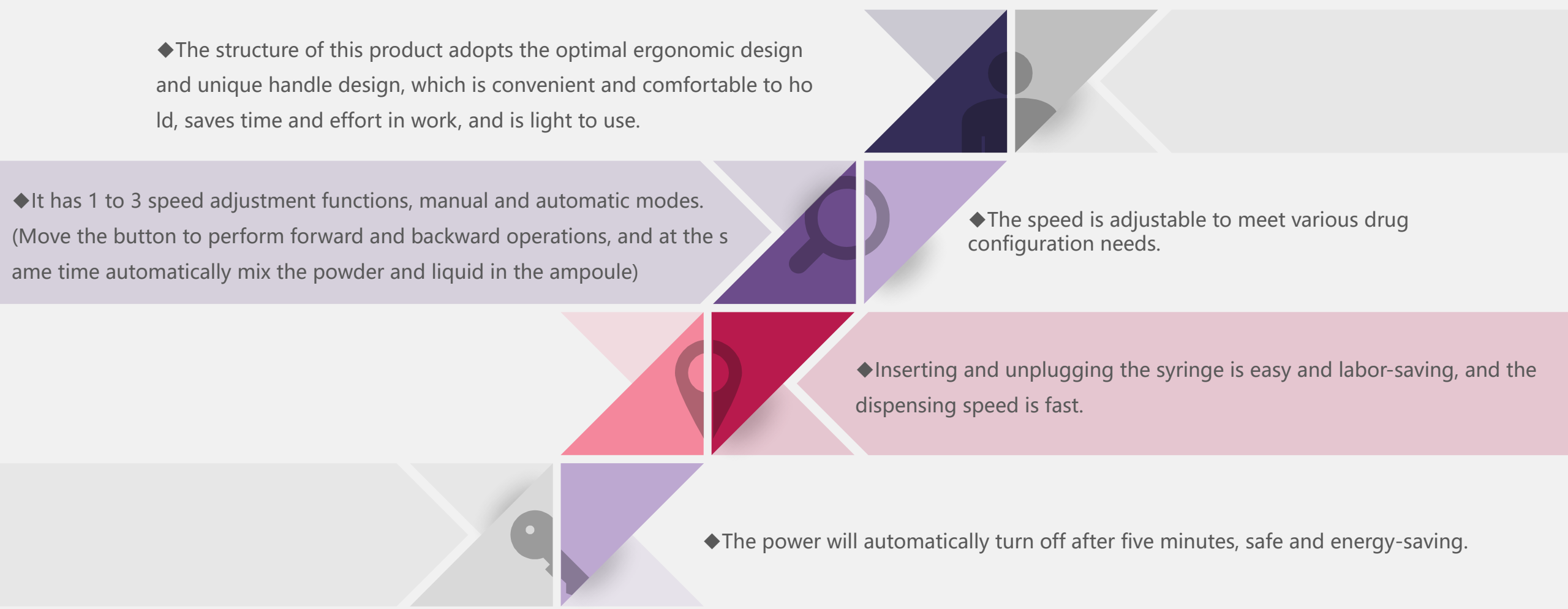

◆Leave it alone for 5 minutes, and the power will automatically turn off. When it is turned on again, the gear will be the off gear, and there is no need to reset it.

04

◆Gears 1, 2, and 3 represent different speeds (low, medium, and high), and gear 1 has the lowest speed; when the dispensing machine turns on gear 1, it drives the syringe to suck the medicinal liquid. When the suction volume reaches the set value, manually press up and down key or select automatic mode to mix the liquid medicine at a uniform speed.



# 01 Features



◆The structure of this product adopts the optimal ergonomic design and unique handle design, which is convenient and comfortable to hold, saves time and effort in work, and is light to use.


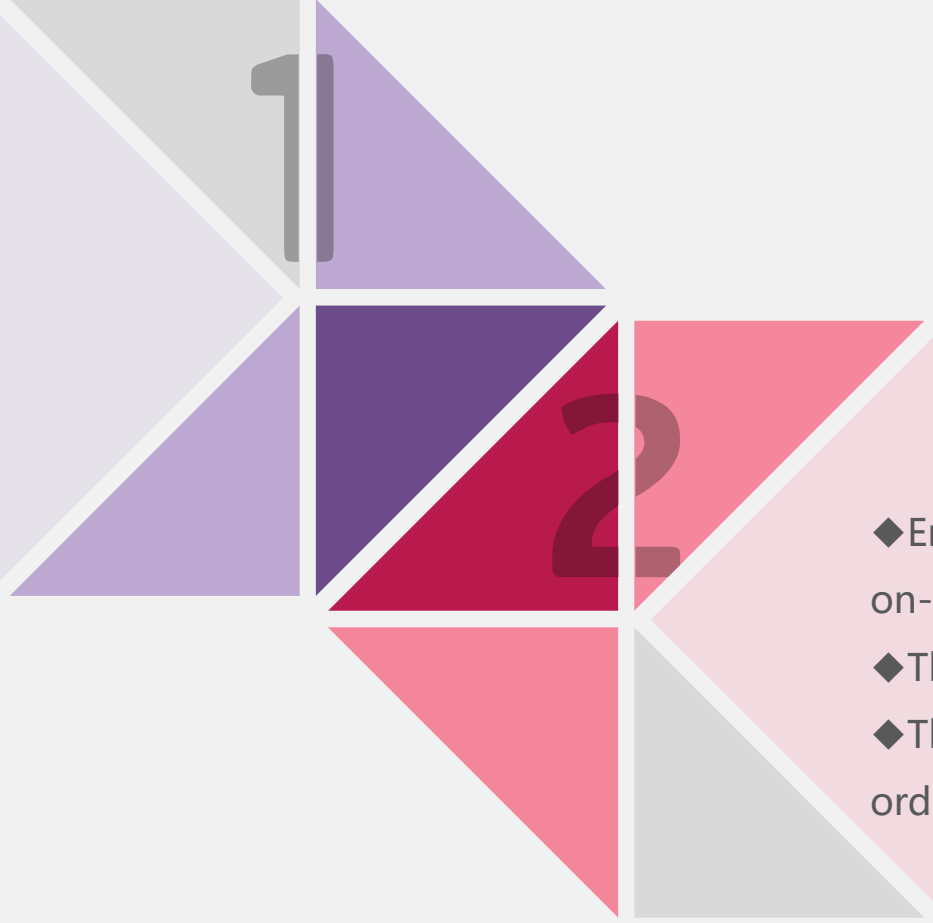
◆It has 1 to 3 speed adjustment functions, manual and automatic modes. (Move the button to perform forward and backward operations, and at the same time automatically mix the powder and liquid in the ampoule)

◆The speed is adjustable to meet various drug configuration needs.

◆Inserting and unplugging the syringe is easy and labor-saving, and the dispensing speed is fast.

◆The power will automatically turn off after five minutes, safe and energy-saving.

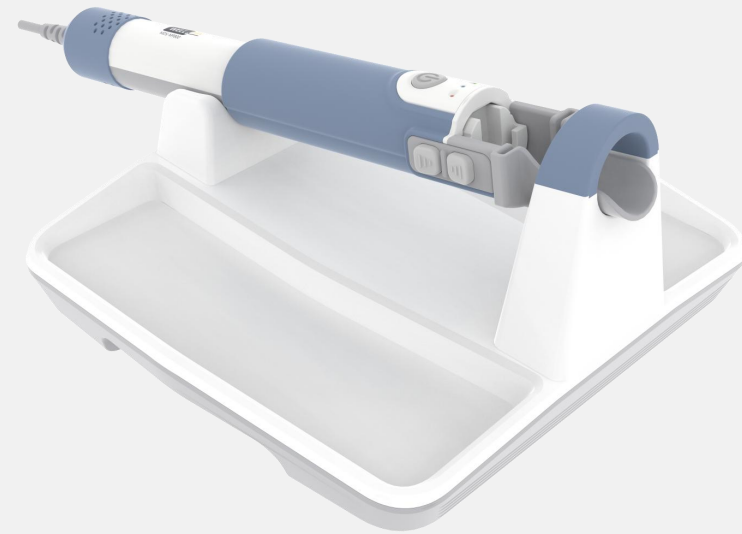
# 01 Advantages

- 
- 
- ◆ Reduce occupational injuries such as tenosynovitis and drug contamination among nurses;
  - ◆ Improve the efficiency of dispensing and save human resources;
  - ◆ Mix the medicine evenly, saving time and effort;

- ◆ Ensure that medicines are clean and pollution-free;
- ◆ The operation is simple and easy to learn;
- ◆ The dispensing speed can be adjusted according to the medicine;

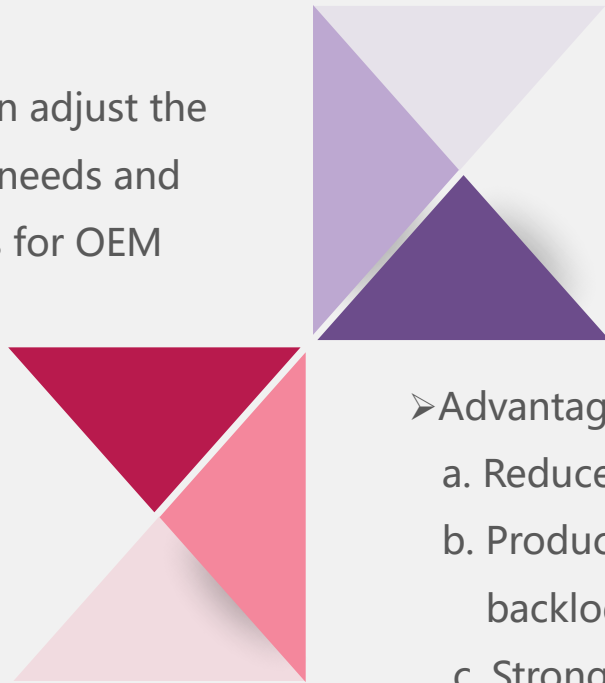
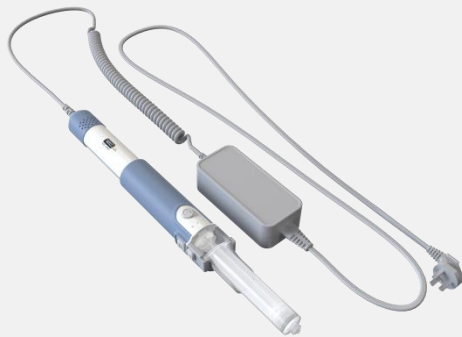


## 02 Dispenser OEM/ODM cooperation



## 02 OEM/ODM Cooperation

➤ Exclusive design: Our company can adjust the design plan according to customer needs and customize customer-specific brands for OEM production.



➤ Advantages of cooperation:

- a. Reduce R&D costs and product costs for enterprises;
- b. Produce on demand, and the company has no product backlog pressure;
- c. Strong flexibility and technology can be updated at any time;
- d. Reduce production links, allowing companies to invest more energy in developing channels and improve corporate competitiveness;



# Sincerely invite cooperation

Weihai Medison Medical Equipment Co., Ltd

