

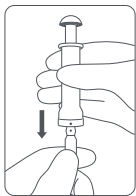
Ampoule Opener

OPERATING MANUAL

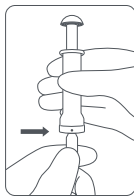
[Product Model] 1-2ml, 5ml, 10ml, 20-25ml.

[Applicable Scope] Ampoule users

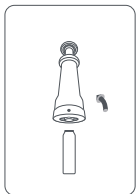
[USAGE]



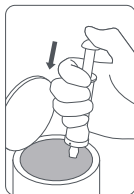
1. Insert Ampoule into opener with the mark point of ampoule aiming at mark point on ampoule opener.



2. Insert the ampoule into mark line of ampoule opener indicated in the picture. Pay attention to that mark position of ampoule neck should be parallel with end of entrance of opener. The slippery rod on the top of opener will be ejected by ampoule.



3. Break the ampoule backward with proper strength.



4. Press the slippery rod ejected by the top of ampoule. Place the broken ampoule neck part into proper container.

[ATTENTIONS] Sterilization method: autoclaving sterilization or Alcohol disinfection. Disinfect the whole ampoule opener without disassembling daily or once a week.



Weihai Medison Medical Equipment Co., Ltd
Add: Qujiahe Industrial Park, Yangting Town, Huancui District, Weihai City,
Shandong Province, China

Tel: +86 631 5337707

Fax: +86 631 5337706

Web: www.imedison.com

E-mail: imedison01@imedison.com